

RAVENSCROFT FIRE DAMPER FOR CONCRETE/MASONRY

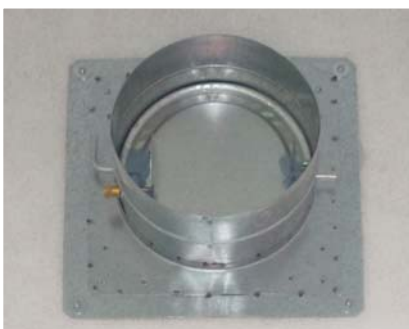


The Ravenscroft Fire Damper for concrete/masonry (also known as BSD-C) is similar to the Ravenscroft plasterboard wall fire damper, but without the insulated sleeve.

The concrete/masonry version is available for installation in Concrete, Concrete Block, 'Hebel Powerpanel System', Cross Laminated Timber, or other solid wall or floor fire separations. It is supplied with one fixed flange only that allows it to be centred and fixed to one side of the wall or ceiling prior to final grouting.

Fire dampers are rated up to 2 hours. Fuse release is external therefore damper is easily activated and reset during building maintenance checks.

A duct inspection hatch is not required to check either the damper operation or the fuse.



Ravenscroft Fire Damper can be converted to a Smoke Damper when factory fitted with a specially designed Belimo spring-return actuator. An optional thermal tripping device allows it to be used as a combination Fire/Smoke Damper.

The Ravenscroft Fire Damper has many advantages over traditional fire dampers:

- Fast installation
- Fire rated up to 2 hours
- No balancing damper or duct access hatch required
- Custom lengths on request
- Also available as plasterboard wall version
- Motorised Smoke Damper version
- Stainless steel version



To see the quick and easy damper installation yourself, visit ravenscroft.co.nz/index.php/video to view the damper installation comparison video!

RAVENSCROFT FIRE DAMPER FOR CONCRETE/MASONRY

INSTALLATION

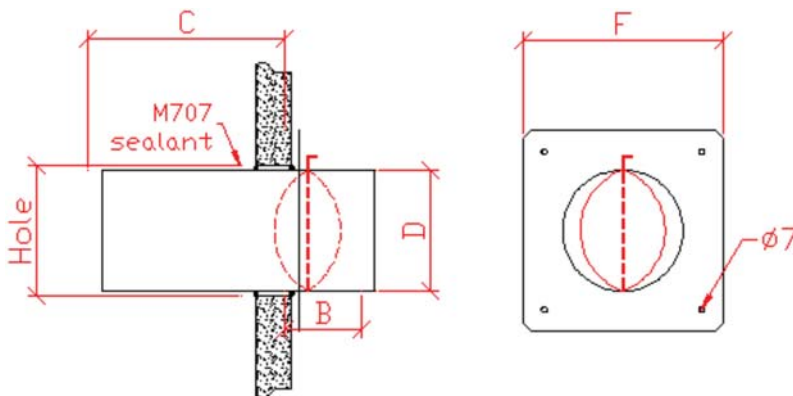
The Ravenscroft Fire Damper for concrete/masonry is a fire rated damper that, when installed as per the manufacturers instructions, will maintain the integrity of concrete firewalls or floors for up to 2 hours.

The Ravenscroft Fire Damper for concrete/masonry is a combined balancing and fire damper. It can function as a manual reset smoke damper if one of the release alternatives are selected.

Flexible ductwork connectors must be used to separate rigid ducting from the damper. These prevent excess force being transferred to the wall or ceiling mounting in the advent of ductwork deformation or collapse during a fire or earthquake.

The damper can easily be tested and preset with the indicator handle from outside the duct. Duct access panels are not required.

The fire dampers are delivered with full installation instructions.



| BSD-C | D | Hole | B | C | F |
|-------|-----|------|-----|-----|-----|
| 125 | 124 | 135 | 95 | 245 | 180 |
| 150 | 149 | 160 | 95 | 245 | 210 |
| 175 | 174 | 185 | 95 | 245 | 230 |
| 200 | 199 | 210 | 95 | 245 | 255 |
| 250 | 249 | 260 | 95 | 245 | 300 |
| 300 | 299 | 310 | 155 | 245 | 370 |
| 400 | 399 | 410 | 155 | 245 | 480 |

APPROVAL

Tested to AS1530.4-1990. FRR 120 minutes in plasterboard walls. BRANZ Test Report FP 2376.

For masonry walls the standard Ravenscroft fire damper, BSD-C, without the insulated sleeve is available satisfying AS1530.4-1990 for at least 120 minutes under BRANZ Opinion 97/1026.

The Ravenscroft fire damper for plasterboard walls, BSD-PW, meets the requirements of AS1682-1991 Parts 1 & 2. (Means of Code Compliance: Verification by Laboratory Test)

RELEASE ALTERNATIVES

Alternative means of release are available on application. These include e.g. specially designed Belimo spring-return actuators and heat release sensors.

SOUTH ISLAND SALES

Ravenscroft
03 389 2231
www.ravenscroft.co.nz

NORTH ISLAND SALES

Pacific HVAC
0800 100326
www.pacificvac.com